

# PRODUCT DATA SHEET



## IRON HD 6"

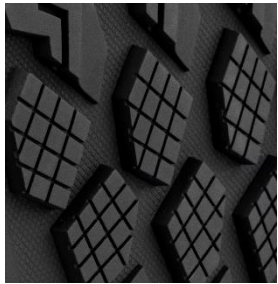
ASTM F2413-18 EH WP PR

ASTM F3445-21 SR

Art. No. 632715



- Protection:** composite-fiberglass toe cap
- Plus:** heel counter for extra stability and protection, ladder grip
- Upper:** premium oiled full grain leather
- Lining:** BreathActive functional lining with waterproof CTX<sup>®</sup> membrane
- Footbed:** evercushion<sup>®</sup> MAX
- Shank:** extra high Scuff Cap
- Midsole:** PU midsole, for cushioning and shock absorption, IQ.CELL integrated in the heel area
- Outsole:** HEAVY DUTY - oil resistant, TPU outsole with slip resistant octopus pattern for enhanced grip (self-cleaning) and ladder grip
- Color:** brown
- Sizes:** 7, 8-12,13,14



### HEAVY DUTY SOLE

The outdoor sole is meticulously designed to meet the highest safety standards while providing the utmost comfort. Trust in its exceptional slip-resistant octopus tread pattern, TPU outsole with ladder grip, PU midsole and cushioning IQ.CELL technology - to enhance your performance and keep you safe during your job.



### SCUFF CAP

Over-the-toe extra high scuff cap for wearers who kneel a lot in their job.



### EVERCUSHION<sup>®</sup> MAX

Maximum comfort and a perfect fit thanks to the cushioning, breathable and moisture-regulating evercushion<sup>®</sup> MAX footbed. The textile surface is not only non-slip, but also has an antibacterial HYPRO ODOR CONTROL treatment that reliably combats unpleasant odours. The foot receives perfect support from the longitudinal arch support. Pressure points are reduced and stress on feet, ankles and knees is minimized. This is the support you need for your best performance at work



### CTX<sup>®</sup> WATERPROOF MEMBRANE

We use an extremely durable water resistant and breathable high-tech CTX<sup>®</sup> membrane. Its microporous fabric structure protects feet from stagnant moisture.